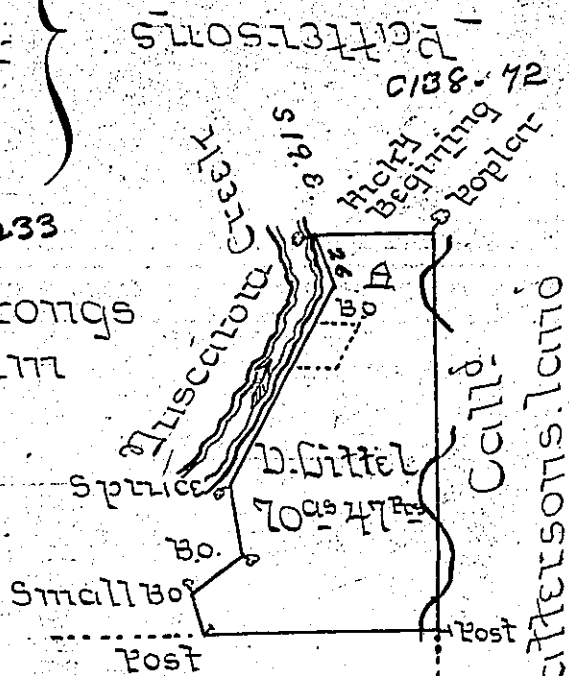


Notes
 a House
 a Meadow or field Cleared

Q 233
 Armstrongs Claim

Lands of M^cCulley or Stuart



Course & Distance

Beginning at a Hickory

S 19 E	26	To a Bo.
S 26 W	96	a Spruce
S 13 E	28	a. Bo.
S 45 W	28	a small Bo.
S 14 E	17 1/2	a post
N 87 E	98 1/2	a post
N 2 W	168 1/4	a poplar
S 88 W	49	a Hickory.

The place of Beginning -

A Draught of a tract of land Situate in Milford Township (Cumberland formerly) now Mifflin County containing Seventy acres and 47 perches and the Allowance of six Percent for Roads &c Said to have been Surveyed by James Harris late US the 25th Day of April 1761. In pursuance of a Location granted to David Littel the 22^d Day of January 1767 - No 2528 - Examined the lines of the above Survey December the 10th 1800 -

W^m William Harris US.

To Samuel Cochran Esquire
 Sur^t Gen^l of Pennsylvania

IN TESTIMONY that the above is a copy of the original remaining on file in the Department of Internal Affairs of Pennsylvania, made conformably to an Act of Assembly approved the 16th day of February, 1833, I have hereunto set my Hand and caused the Seal of said Department to be affixed at Harrisburg, this sixth day of September 1905.

Leach J. ...
 Secretary of Internal Affairs.